

# SUNSHADE SYSTEM

## CATALOGUE



onmar 

ENHANCING BRAND VALUE



Sunshade System is a self-tensioning and free-standing system that is easy to set up, take down and store. It adapts well to a multitude of installation configurations. Sockets can be installed at any desired position for more complete coverage in comparison to traditional systems. The system is highly cost-efficient in comparison to many industry standard systems.

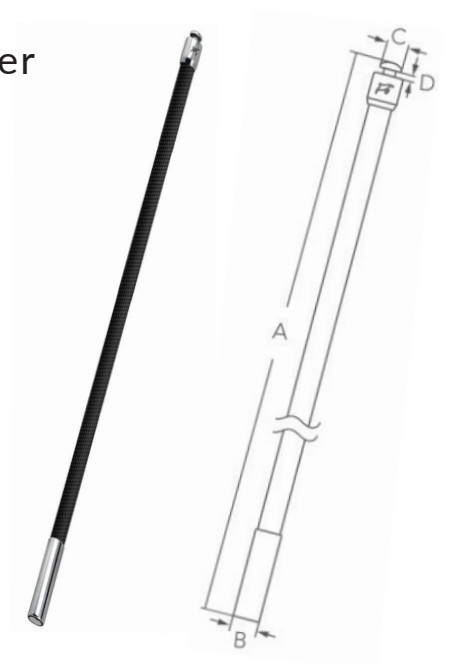
# POLE

Stainless Steel 316 & Fiberglass With Carbon Fiber

- Quality carbon fiber finish on each pole.
- Compatible with any customized canvas.

## PART NUMBER

PART NUMBER	A mm	B mm	C mm	D mm
M7-91-0506851	1215	22	18	5
M7-91-0506852	1372	22	18	5
M7-91-0506853	1535	22	18	5
M7-91-0506854	1700	22	18	5
M7-91-0506855	1845	22	18	5
M7-91-0506856	2000	22	18	5



# SOCKET W/CAP

## Stainless Steel 316

- Designed with a 15° angle to create self-tensioning of poles, ensuring secure installment.
- Anti-rattle design incorporates a rubber bushing under the cap hinge to ensure that the cap stays in the open or closed position underway.
- Cap is designed to prevent water flowing directly into the socket. However, this socket is not self-draining and must be maintained to prevent corrosion as rusting may result from sitting water.
- Requires a 28 mm installation hole with 15° angle.
- U-shaped backing plate is included.
- Screw size M5 or #10.



### PART NUMBER

	A mm	B mm	C mm	D mm
M7-92-0506865	28	49	67	13



# SOCKET STUD TYPE

## Stainless Steel 316

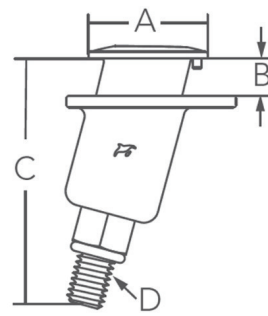
- Designed with a 15° angle to create self-tensioning of poles, ensuring secure installment.
- Small face with low profile, ideal for boats with narrow gunnels.
- Self-draining design incorporates a threaded barb for 12.5 mm draining hose.
- Included seal gasket eliminates the need for caulking.
- Requires a 28 mm installation hole with 15° angle and a notch hole to align the angle in the right direction.



To simplify installation, use installation plate.

### PART NUMBER

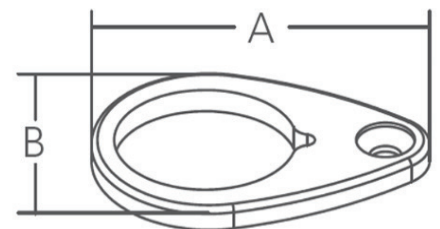
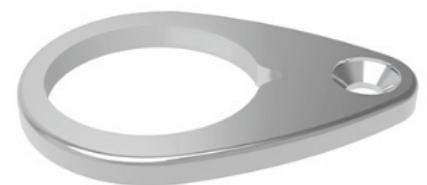
	A mm	B mm	C mm	D mm
M7-92-0506867	40	13-22	85	12,7-13



# INSTALLATION PLATE

## Stainless Steel 316

- Simplifies installation process of M7-92-0506867.
- Eliminates the need to cut a notch for socket orientation.
- Plate incorporates a notch hole and screw hole, allowing customers to easily distinguish the direction and necessary angle to install.
- Screw size M5 or #10.



### PART NUMBER

	A mm	B mm
M7-38-0506867-V2	58	40

# SOCKET RAIL MOUNT

## Stainless Steel 316

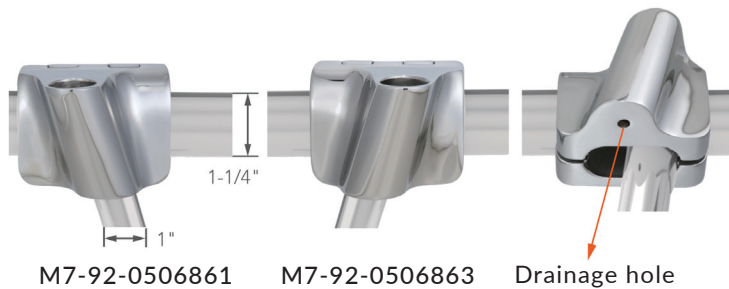
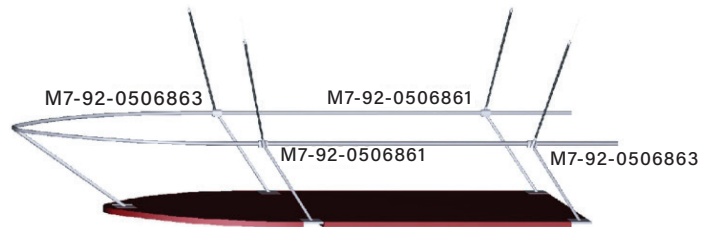
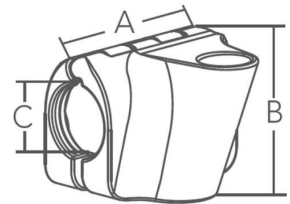
- Socket should be installed where supports meet the horizontal rail to ensure stability and prevent movement and turning underway. Sockets should be installed facing the outside of the boat.

- Designed with a 15° vertical angle combined with an outboard angle pointing away from the bow/stern to create a self-tensioning system.

- Fits 32 mm horizontal rails and 25.5 mm support rail.

- Self-draining design.

- 6.35 mm - 20T Allen screws are included.



### PART NUMBER

	A mm	B mm	C mm
M7-92-0506861	80	61	32
M7-92-0506863	80	61	32



# ACCESSORIES

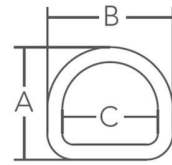
## Stainless Steel 316

### WELDED D RING

A welded D ring sewn into fabric for fastening is recommended.



M7-38-0618004

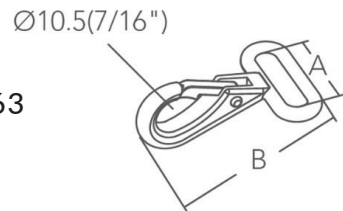


A : 30 mm  
B : 33,6 mm  
C : 25,5 mm  
Ø : 4 mm

### HEAVY DUTY WEBBING SNAP HOOK



M7-40-8928263



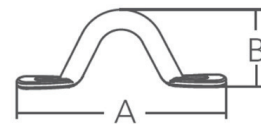
A : 26 mm  
B : 50 mm

### EYE STRAP

Screw size #6 or M4.



M7-40-2110014-8



A : 61 mm  
B : 22 mm  
Ø : 6 mm

### SNAP HOOK

Screw size #8 or M4.  
Sold in pairs.

Available in 2 variants.



**Variant 1**  
M7-38-8631407

**Variant 2**  
M7-38-8631406



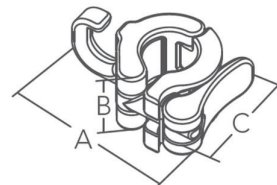
A : 38 mm  
B : 33 mm  
Ø : 24 mm

A : 42 mm  
B : 33 mm  
Ø : 24 mm

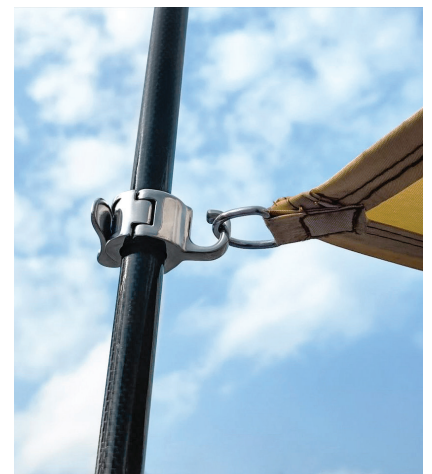
### QUICK RELEASE HOOK



BN-102035



A : 60 mm  
B : 24 mm  
C : 24 mm





For technical and availability information,  
please contact Onmar.

+46 (0) 16 42 86 80  
info@onmar.se  
www.onmar.se



ENHANCING BRAND VALUE